

USB 3.0 GIGABIT ETHERNET ADAPTER

QUICK INSTALLATION GUIDE

INTRODUCTION

Thank you for ordering the USB 3.0 Gigabit Ethernet Adapter. The USB 3.0 Gigabit Ethernet Adapter offers the most convenient and efficient way to connect with a Notebook or desktop to an Ethernet network over Super-Speed USB 3.0.

PACKAGING CONTENTS

- ◆ 1 * USB 3.0 Gigabit Ethernet Adapter
- ◆ 1 * Driver CD
- ◆ 1 * Quick Installation Guide

SYSTEM REQUIREMENTS

- ◆ Available USB port
- ◆ Windows XP/ Vista/ 7/ 8/10 (32-bit or 64-bit)
- ◆ Mac OS 10.6 or later

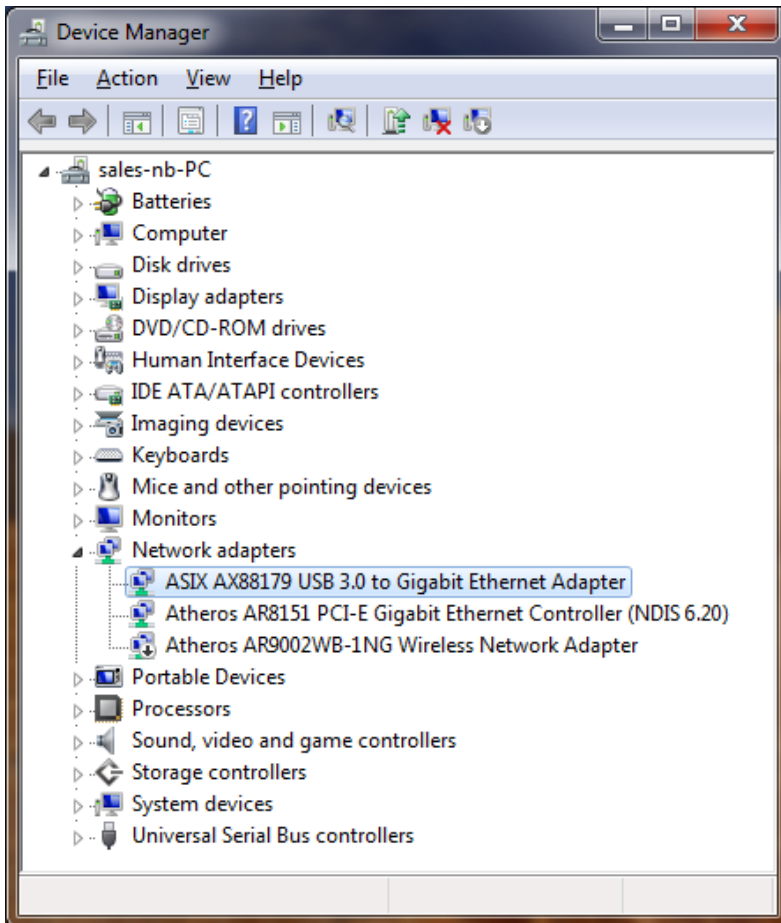
DEVICE DRIVER INSTALLATION (WINDOWS)

1. Insert the Driver CD into CD-ROM drive; the setup program should be launched automatically. Or, double click “D:\Setup.exe (where D: is the path of your CD-ROM drive) and follow the instructions.
2. Click “Finish” to complete the driver installation. Plugging USB 3.0 Gigabit Ethernet Adapter into a USB port on your computer and the other end to the USB host port of computer. It is ready to use.

VERIFYING DEVICE INSTALLATION

Please right click “My Computer” → “Properties” → “Device Manager”. Please double click “Network adapters”.

It will show the “ASIX AX88179 USB 3.0 to Gigabit Ethernet Adapter”



DEVICE DRIVER INSTALLATION (MAC)


1. Insert the Driver CD into CD-ROM drive, and click the Mac program: “AX88179_178A.dmg” that is located on the driver CD.
2. Click this *.dmg file and a virtual disk will be appeared on the Desktop of your Mac computer. Click this virtual disk, then click the “*.pkg” file to

run the driver installation process.

(This virtual disk will be auto-removed after restart the Mac computer)

3. Click "Continue" and follow the steps to complete installation.
4. At the end of the installation, you need to restart your computer. Close all programs and click restart to complete installation.
5. After restart your Mac computer, plug the USB 3.0 Gigabit Ethernet Adapter into any USB port of your Mac computer, and it is ready to connect with the network.

VERIFYING DEVICE INSTALLATION

Please Click “ System information → “USB Device Tree”. It will show a new direction “AX88179” on USB 3.0 SuperSpeed Bus/USB High-Speed Bus.

